



1424 East College Drive - Suite 600
Market Street Office Complex
Marshall Minnesota 56258

phone (507) 537-0396 ext. 3
fax (507) 532-7479

DATE: July 16, 2009

TO: Landowners in the South Branch of the Yellow Medicine River Watershed

FROM: Rose Anderson, Administrator, Lyon Soil & Water Conservation District

SUBJECT: Opportunity for Funds complete conservation projects

The *Lyon Soil & Water Conservation District* and the *Lincoln Soil & Water Conservation District* in cooperation with the Yellow Medicine River Watershed would like to invite you to participate in an opportunity to receive cost share/incentive payments toward the establishment of Best Management Practices such as:

Filter Strips: We offer a one time upfront incentive payment at the rate of \$500.00 per acre, in addition to CRP payments for the enrollment of a 120 ft CRP Filter Strip.

Haying Incentive: Cooperator may enroll a minimum of 200' along a qualifying watercourse for 10 years ~ receive an *upfront payment of \$500.00* and still be allowed to harvest the hay. No grazing or manure application will be allowed, however commercial fertilizer ~applied according to acceptable rates ~ will be allowed.

Nutrient & Manure Management Plan: In addition to the EQIP program payments, we will offer a one time \$14 an acre payment.

Residue Management Incentive: In addition to the EQIP program payments, we offer a one time \$14 an acre incentive payment for a qualifying residue management.

Alternative Tile Intake: Our program will offer incentive funds for the replacement of open intakes with alternative intakes at 75% cost share not to exceed \$500.00.

Feedlot Runoff Reduction Program: Will offer \$10,000.00 per feedlot, in addition to federal or state cost share not to exceed 75% C/S.

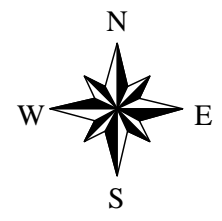
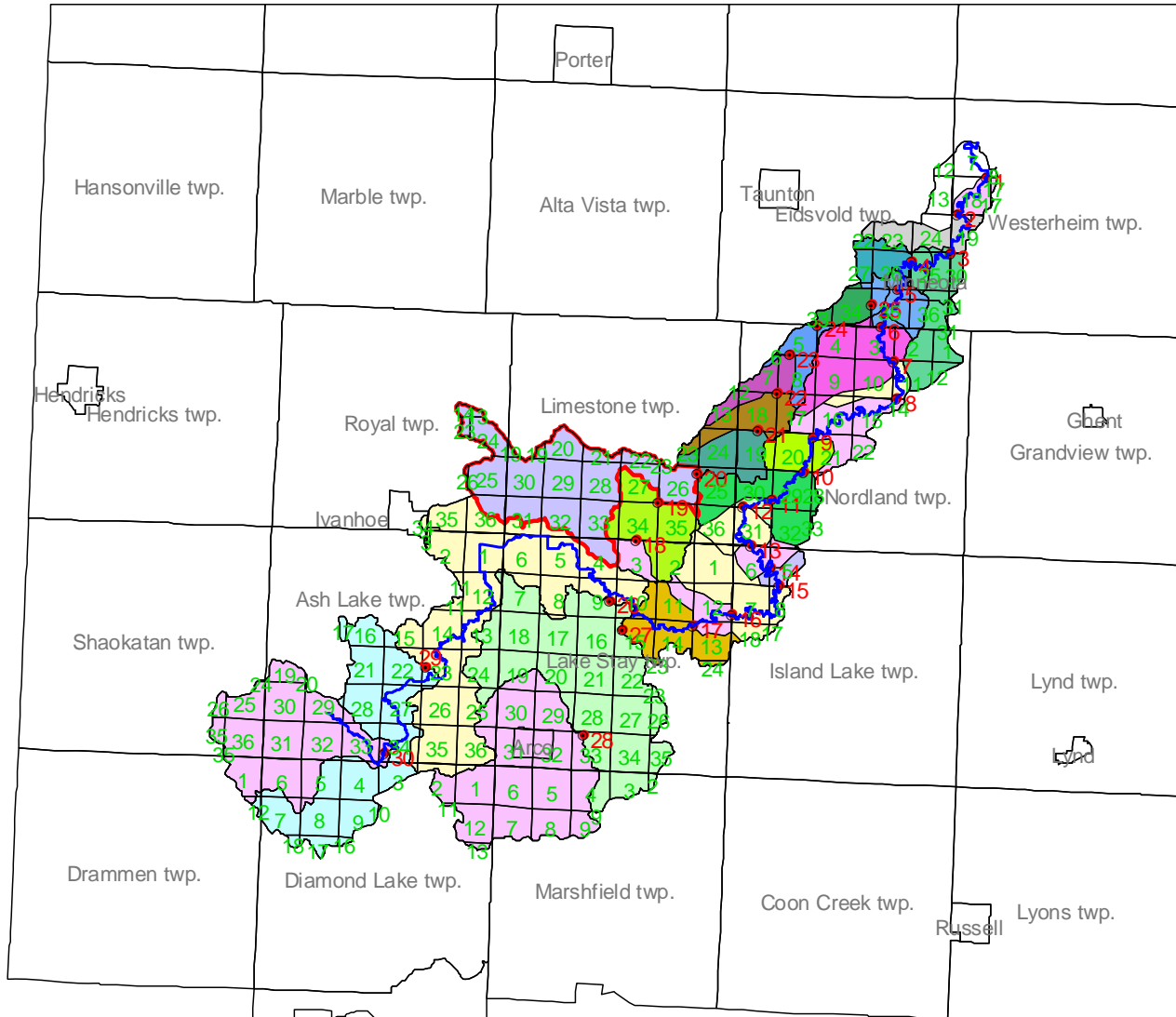
Installation of Fencing: We offer a \$1.00 p/ft to install a state or federal standard fence along a qualifying area, not to exceed 75% cost share.

Rotational Grazing Program: We offer a one time payment of \$20.00 per acre, in addition to the EQIP program payments.

- **If interested, please contact us soon,
~ funding is limited as is the time it will be available.**

See map on back of this letter that shows the area that qualifies for this program.

Watershed area of South Branch TMDL



Site20.shp